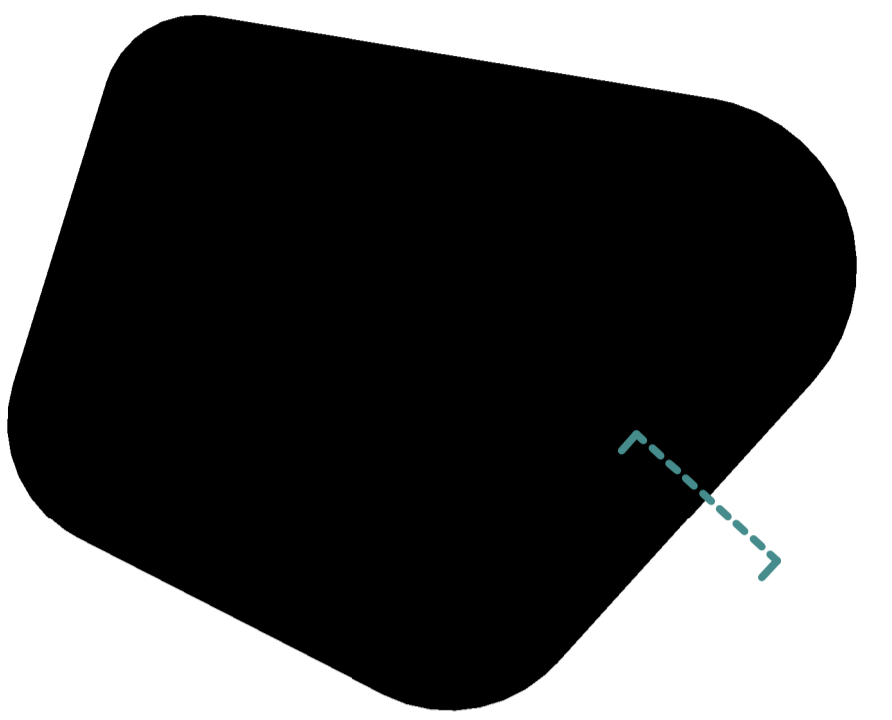


The use of this data by the recipient acts as an agreement of the following statements:  
 Do not use this data if you do not agree with any of the following statements:  
 All drawings are based upon site information supplied by third parties and as such their accuracy cannot be guaranteed. All features are approximate and subject to clarification by a detailed topographical survey, statutory service enquiries and confirmation of the legal boundaries.  
 The controlled version of this drawing should be viewed in DWG or PDF format not DWG or other formats. All points of this drawing must be made in full colour.  
 Where this drawing has been based upon Ordnance Survey data, it has been reproduced under the terms of Ryder Licence No. 10000144. Reproduction of this drawing in whole or in part is prohibited without the prior permission of Ordnance Survey.  
 Do not scale the drawing. Use figured dimensions in all cases. Check all dimensions on site. Report any discrepancies in writing to Ryder before proceeding.



- 1 Ss\_25\_10\_20\_85  
Stick curtain walling systems
- Ss\_25\_10\_20/285  
Structural sealant/ bonded glazing
- 2 Ss\_25\_10\_20\_85  
Stick curtain walling systems
- 3 Pr\_25\_71\_14\_19  
Terracotta facade panel
- 4 Ss\_25\_50\_45\_45  
Louvre screen systems
- 5 Ss\_25\_60\_05  
Balustrade and handrail systems
- 6 Main entrance doors to be fully glazed revolving doors with integrated matwell. Door to 3,000mm high. Adjacent pass doors to be outward opening fully glazed power assisted doors operated by PIR with fob access externally and internal release for out of hours use. Manual override linked to fire alarm with fail safe.
- 60 min fire compartment line
- Pr\_25\_80\_81\_51  
Mineral wool fire-stopping Curtain Walling
- Fire rated partition / internal glazed screen jamb at vertical compartment
- Waterproofing line  
Refer to Drawing Series 4110 for waterproofing details
- Fire stop
- Spandrel panel
- Clear glass

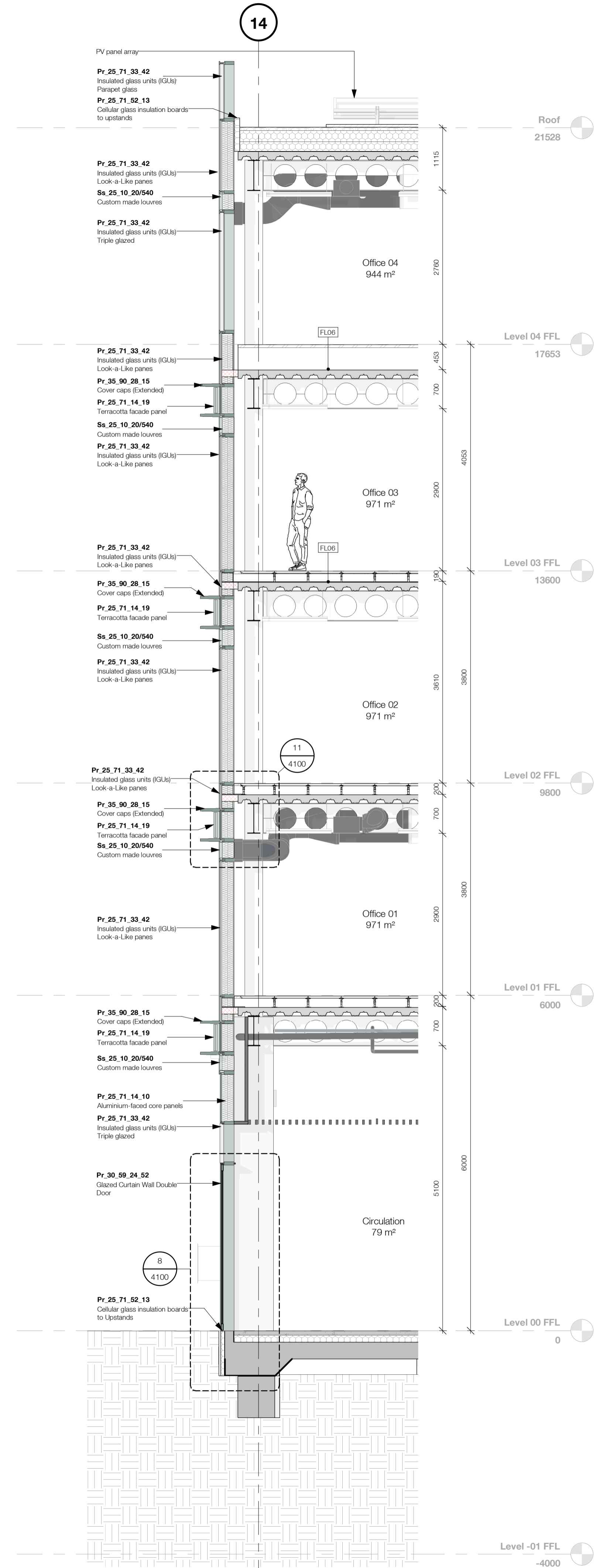
Rev.	Description	Drawn	Checked	Date
P2	Stage 4 Interim cost issue	SCL	FRB	09/02/21
P1	First Issue	JAY	FRB	20/11/20

**Amendment**  
 Suitability  
 Issued for Costing  
**Project**  
 Muse  
 Harton Quays  
 South Shields  
**Drawing**  
 Strip Section B

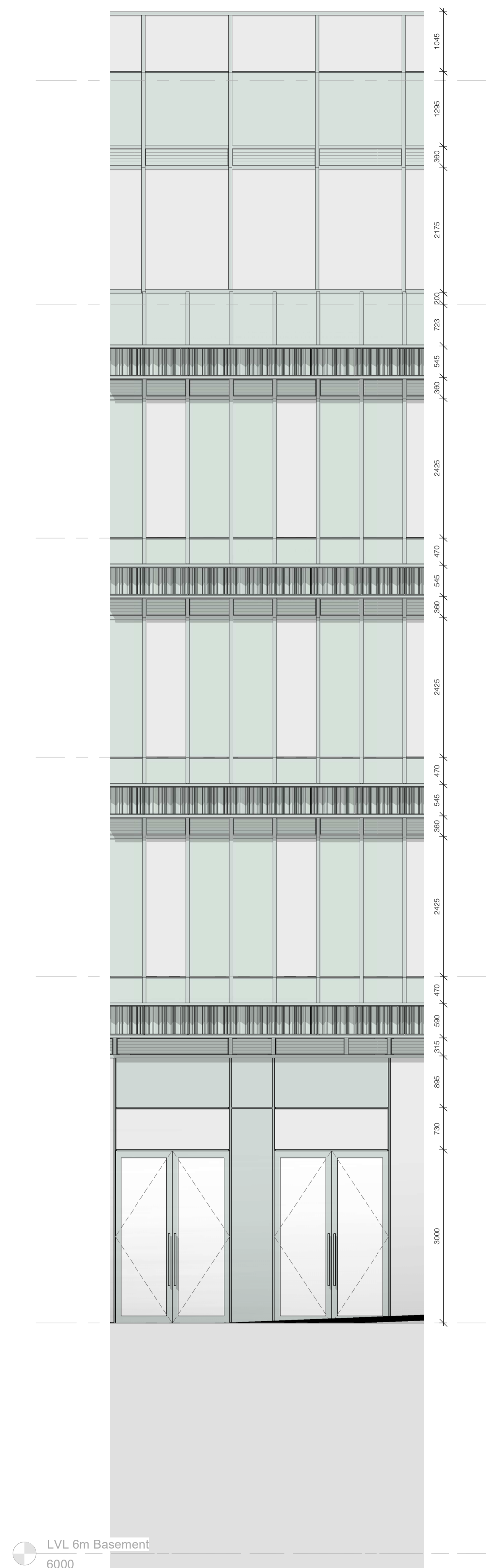
Drawing No.	Originator	Zone	Level	Type	Role	Number
HTQ	- RYD -	00 - ZZ -	DR -	A -	-	3804
Ryder Project No.	Scale at A1	Status	Revision			
10254-00	As indicated	D1	P2			

info@ryderarchitecture.com  
 www.ryderarchitecture.com

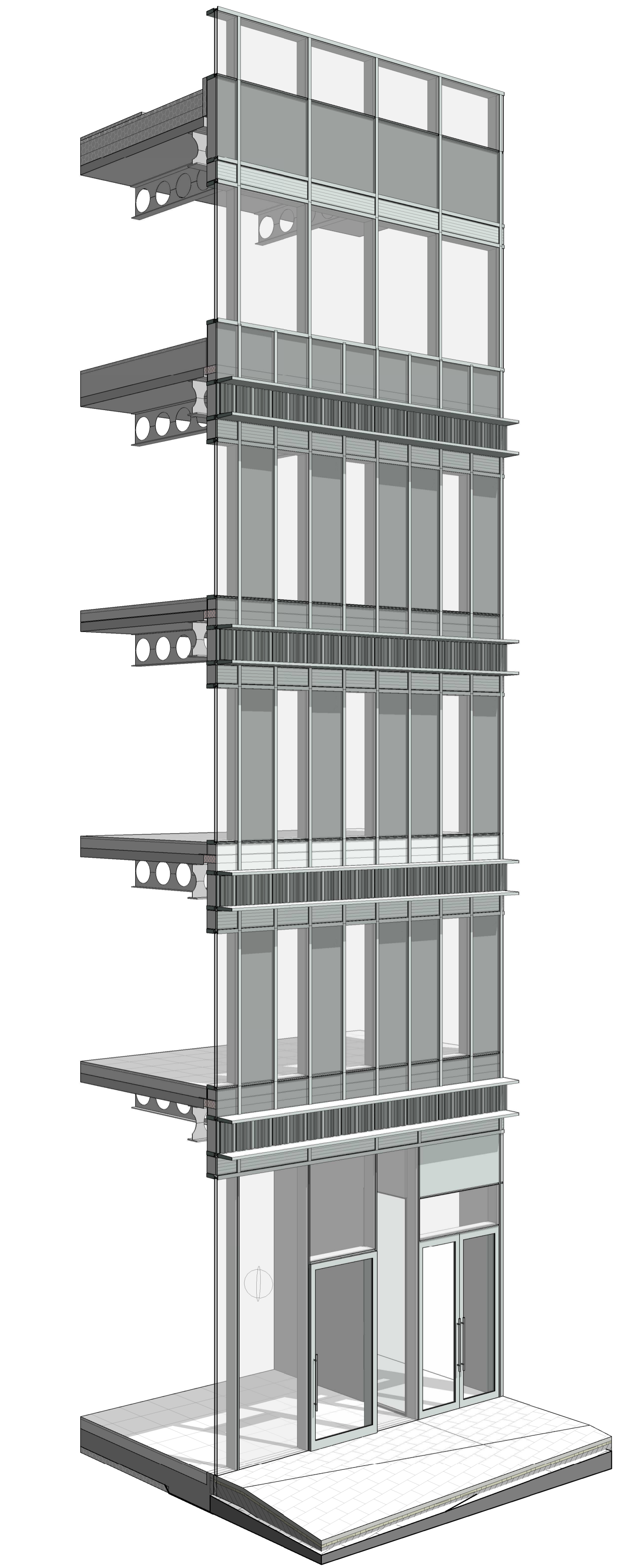
Ryder



1 Strip Section B  
 1:50



2 Strip Section B - Elevation  
 1:50



3 Strip Section B